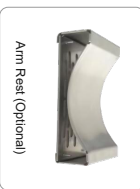


Class II B2 Biological Safety Cabinet



- Safety Performance**
- UV sterilization function and timing function can be set by appointment.
  - Automatic air speed adjustable.
  - With memory function in case of power-failure.
  - Audio and visual alarm (Abnormal airflow velocity, filter failure, UV lamp failure, Front window at unsafe height).
  - Interlock function: UV lamp and front window, UV lamp and blower, LED lamp, Blower and front window.



**Advantage**

- Standard with air velocity sensor. Real-time monitoring and display air velocity.
- Standard with foot switch. Controls the front window to up and down.
- Standard with electric air valve control. It can be controlled through the LCD touch screen.
- Standard with RS485 interface.
- Depth of the cabinet is reduce to 780mm. Better access to the door of laboratory room.
- Unibody design for front panel. Better sealing and safer than the splice style front panel.
- Base stand with foot support for operator comfortable operation.
- Safety login system: three-level authority; control function setting, parameter setting and hierarchical menu entry can be performed.
- Optional LED lamp with adjustable brightness.

**Specification**

Model	BSC-11B2-1100	BSC-11B2-1400	BSC-11B2-1500	BSC-11B2-1800
External Size (W×D×H)(mm)	1050×780×2180	1400×780×2180	1500×780×2180	1800×780×2180
Internal Size (W×D×H)(mm)	950×626×600	1300×626×600	1400×626×600	1700×626×600
Tested Opening	Safety height 200mm (8")			
Max Opening	400mm			
Work Surface Height	800mm			
Control System	7" LCD touch screen			
Alarm	Abnormal airflow velocity, ULPA filter failure, UV lamp failure, Front window at unsafe height			
Airflow Mode	100% air exhaust			
Downflow Velocity	0.35m/s±0.025m/s			
Inflow Velocity	0.52m/s±0.025m/s			
Airflow System				
Inflow Air Volume	355m <sup>3</sup> /h (2090CFM)	486m <sup>3</sup> /h (286CFM)	524m <sup>3</sup> /h (309CFM)	636m <sup>3</sup> /h (375CFM)
Downflow Air Volume	718m <sup>3</sup> /h (423CFM)	983m <sup>3</sup> /h (579CFM)	1058m <sup>3</sup> /h (623CFM)	1285m <sup>3</sup> /h (757CFM)
Exhaust Air Volume	1073m <sup>3</sup> /h (632CFM)	1469m <sup>3</sup> /h (865CFM)	1582m <sup>3</sup> /h (932CFM)	1921m <sup>3</sup> /h (1131CFM)
Air Filtration System				
ULPA Filter	2Pos ULPA filter: ≥99.9995% efficiency at 0.1-0.3 μm, filter life indicator			
Cleanliness Grade	Class 100 (ISO14644, 1 Class 5)			
Main Body	Electro-galvanized steel with antimicrobial Powder Coating			
Cabinet Construction				
Work Surface	304 stainless steel			
Front Window	Motorized, Two-layer laminated toughened glass ≥ 5mm, Anti UV.			
UV Lamp	20W×1	30W×1	30W×1	40W×1
Electrical System				
LED Lamp	Emission of 253.7 nanometers for most efficient decontamination, UV life indicator, UV timer.	16W×2	20W×2	20W×2
Max Consumption	1550W (Not include socket loading power consumption)			
Power Supply	AC220V±10%, 50/60HZ, 110V±10%, 60Hz			
Illumination	≥1000lux			
Sound Emission	≤65dB(A)			
Vibration of Work Surface	≤5μm			
Standard Accessory				
Optional Accessory	1.Base Stand; 2.Air Velocity Sensor; 3.ULPA Filter; 4.LCD Touch Screen; 5.LED Lamp×2; 6.UV Lamp×1; 7.Waterproof Socket×2; 8.Footmaster Caster; 9.Foot Switch; 10.Electric Air Valve Control; 11.RS485 Interface; 12.Exhaust Blower; 13.9m Exhaust Duct (φ305mm); 14.Magnetic file folder; 1.LED Lights With Adjustable Brightness; 2.Gas Tap; 3.Water Tap; 4.IV Bar With Hooks; 5.Manual Adjustable Base Stand; 6.Arm Rest; 7.Side Windows.			
Net Weight (kg)	289.5	323	350	430
Gross Weight (kg)	346	404	435	550
Shipping Size	1150×1080×1710	1550×1120×1710	1650×1120×1710	1950×1120×1710
(W×D×H)(mm)	730×680×500	700×700×500	700×700×500	700×700×500
Shipping Volume (m <sup>3</sup> )	2.6	3.3	3.5	4